



Wiring two EWN-R Metering Pumps to operate from the same Digital signal (slave).

Connecting two EWN-R pumps together is simple with the built-in output in the pumps.

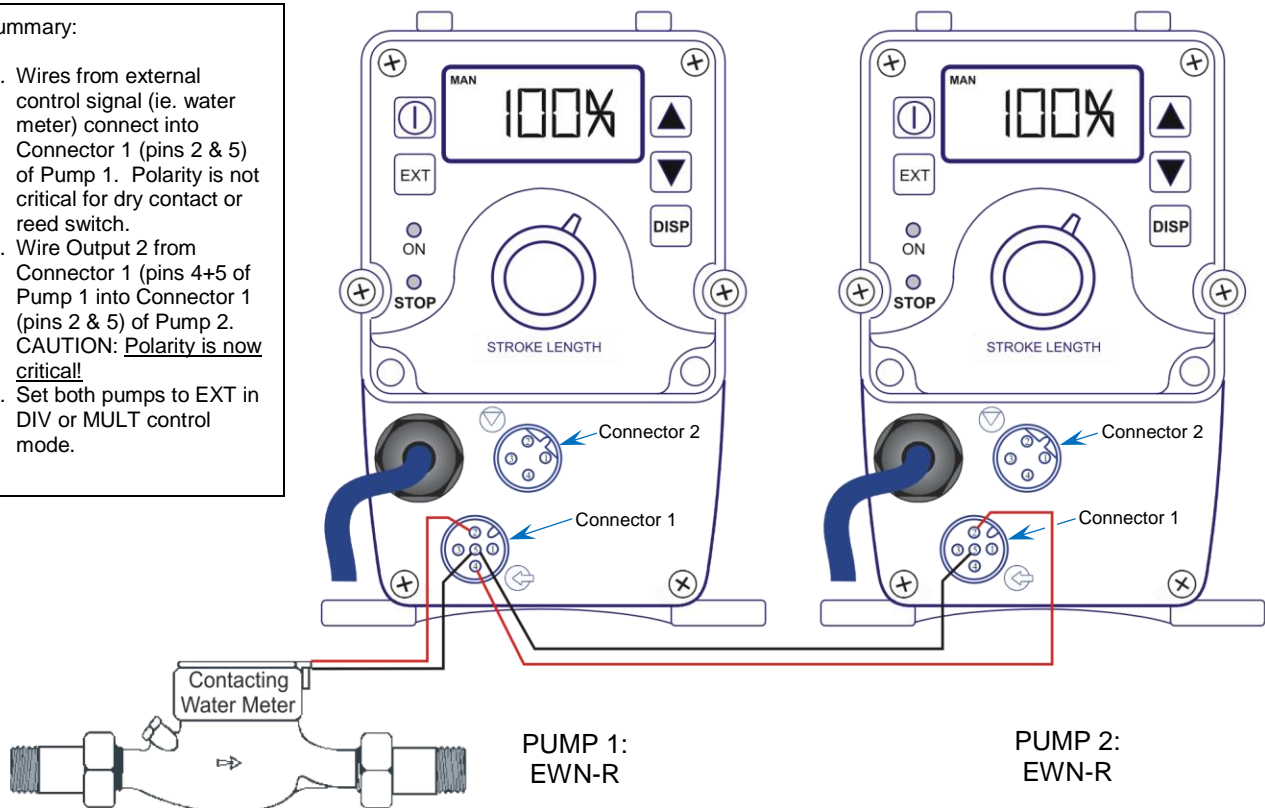
Using an EWN-R pump as the primary pump, connect the signal from the contacting water meter or other external Digital Pulse control device to the input terminals (Pins 2 & 5) of connector 1 on the EWN-R control module. EXT should be selected to operate the primary pump from the external signal in either MULT or DIV modes based on incoming pulse speed. See instruction manual for more detail about wiring and programming an external input.



In the EWN-R control unit, the same Connector 1 contains both the Digital Input and the Output relay. The positive output terminal (Pin #4) is connected to the positive input into pump 2 (Pin #2). The negative output terminal (Pin #5) is connected to the negative input into pump 2 (Pin #5).

Summary:

1. Wires from external control signal (ie. water meter) connect into Connector 1 (pins 2 & 5) of Pump 1. Polarity is not critical for dry contact or reed switch.
2. Wire Output 2 from Connector 1 (pins 4+5 of Pump 1 into Connector 1 (pins 2 & 5) of Pump 2. **CAUTION: Polarity is now critical!**
3. Set both pumps to EXT in DIV or MULT control mode.



With an EWN-R as the 2nd pump, the input terminals (Pins 2 & 5) of Connector 1 are the same as the first pump. The programming of the 2nd pump will also have to be set for EXT control mode and programmed for either MULT (for a 1:1 ratio or higher) or DIV (if it is to be run at a fraction of the first pump's speed).

ADDITIONAL NOTES:

The first pump can also be run in MANUAL mode instead of an external control signal, or be run from an analog signal. The 2nd pump can still be programmed to run faster or slower than the first by multiplying or dividing the signals from the first pump.

REFERENCE:

Connector 1: P/N E90495 (Digital and Analog Input + Outputs for EWN-R)
Connector 2: P/N E90496 (Stop and Pre-Stop Inputs)